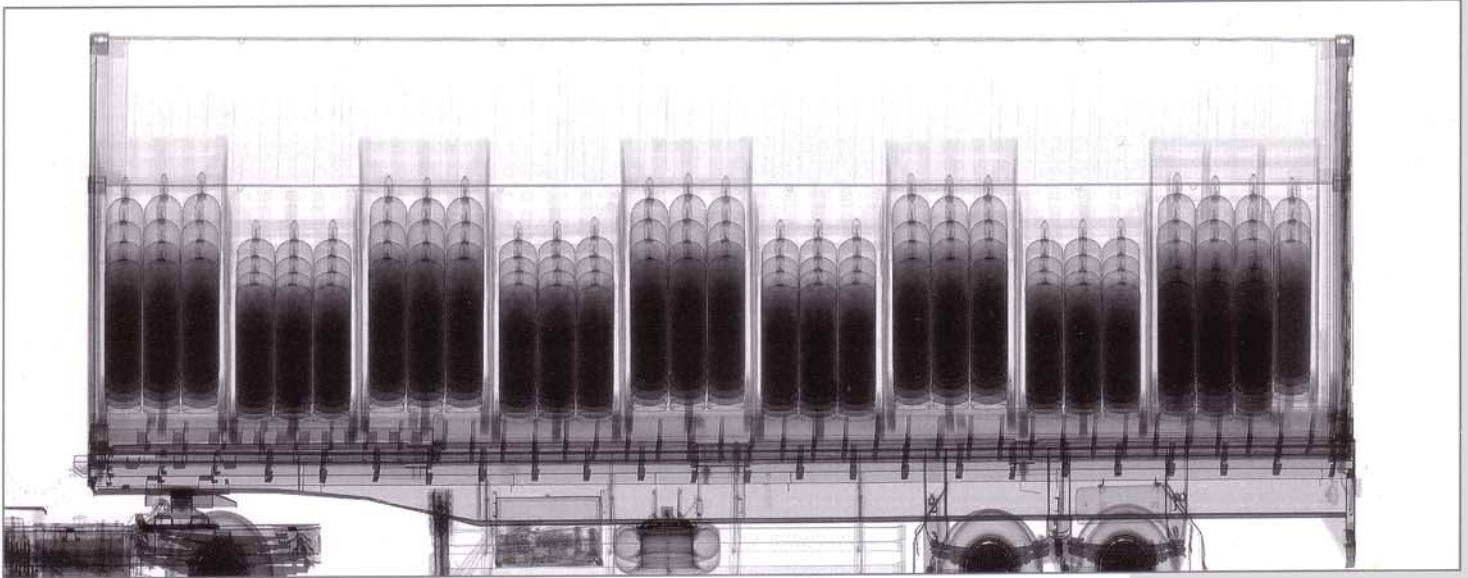


THSCAN[®] FS3000 Fast-Scan Container/Vehicle Inspection System



Technical Data

Type of X-ray source	Electron linear accelerator
Normal energy	2.5MeV
Penetration	≥ 200mm of steel
Max. dim. of scanned vehicle	Length: not limited Width: 2.8m Height: 4.6m
Throughput	200 ~ 400 units of 40 ft containers per hour
Scanning method	The driver drives the container vehicle through the scanning tunnel directly and the system operates automatically
Scanning speed	1m/s ~ 4m/s
Radiation safety area	20m(L) × 7m(W)
Max. dose rate on the system boundary	≤ 2.5μGy/h
Max. absorbed dose for cargo per scan	≤ 2μSv
Max. absorbed dose for driver one pass	≤ 0.02μSv
Dose rate for operator	≤ 1mSv per year
Dose rate for public	≤ 0.1mSv per year
Power consumption	about 30kVA
Operating temperature	-20°C ~ +50°C (optional -30°C ~ +50°C)
Storage temperature	-30°C ~ +55°C
Humidity range	0 ~ 99%, non-condensing
Pixel depth	16 bit
Image acquisition mode	Real-time, synchronized
Zoom	1/4 ×, 1/2 ×, 1 ×, 2 ×, 4 ×, 8 ×
Image analysis	Pseudo color, edge enhancement, filter, contrast adjustment, histogram equalization, linear/logarithm transform, normalization, suspicious item mark and comments, mirror, multi image comparison, procedure record, area calculation, user define macro, etc.
Options	EDI (Electronic Data Interchange); Radioactivity monitor (RM); Container code recognition; Vehicle license plate recognition; Supporting RFID technology Additional Features (Computerized risk management system; Image query)

Company Locations

NUCTECH COMPANY LIMITED

Address: 2/F Block A, Tongfang Building,
Shuangqinglu, Haidian District,
Beijing PRC. 100084

Tel: (8610) 62780909

Fax: (8610) 62788896 62784270

Website: <http://www.nuctech.com>

NUCTECH HONG KONG COMPANY LTD.

Address: 2102, The Metropolis Tower,
10 Metropolis Drive, Hunghom,
Kowloon, Hong Kong

Tel: (00852) 2722828

Fax: (00852) 27221828

NUCTECH SYDNEY PTY LTD.

Address: Suite 14 702-710 Botany Rd Mascot,
NSW 2020 Australia

Tel: 0061-2-93172168

Fax: 0061-2-93172118

NUCTECH WARSAW COMPANY LIMITED SPOTKA Z.O.O.

Address: ul. Pandy 18
02-202 Warsaw Poland

Tel: +48 22 6591545

Fax: +48 22 6581483

JNE SECURITY SYSTEMS LTD.

Address: 1 Antares Drive, Suite 230
Ottawa, ON K2E 8C4 Canada

Tel: (613) 249 9602

Fax: (613) 249 0421

All copyright reserved by Nuctech Company Limited.

Technical data may change without notice.

© 2006 NUCTECH COMPANY LIMITED



NUCTECH HAS ACQUIRED THE CERTIFICATE OF QUALITY MANAGEMENT SYSTEM (ISO9001:2000)
NUCTECH HAS ACQUIRED THE CERTIFICATE OF ENVIRONMENTAL MANAGEMENT SYSTEM (ISO14001:2004)
NUCTECH HAS ACQUIRED THE CERTIFICATE OF OCCUPATIONAL HEALTH AND SAFETY MANAGEMENT SYSTEM (OHSAS18001:1999)

