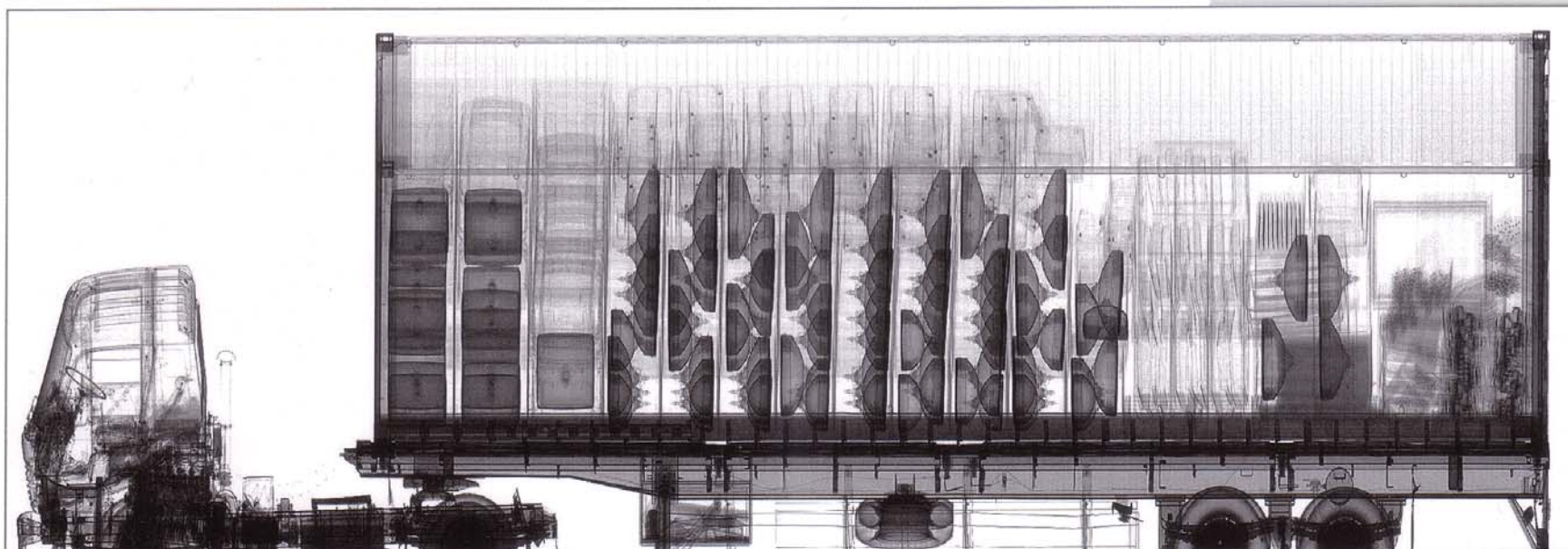


THSCAN[®] MT1213LT Mobile Container/Vehicle Inspection System



Technical Data

Type of X-ray source	Electron linear accelerator
Normal energy	4MeV
Penetration	≥ 280mm of steel
Max. dim. of scanned vehicle	Length: 18.0m(which can be expandable on request of customers) Width: 2.6m Height: 4.6m
Throughput	20 units of 40ft containers per hour
Scanning method	The scanned objects keep still and the scanning system moves
Radiation safety area	≤ 38m(L)×30m(W) (for 18m scanning length)
Standard operator number	2
Scanning speed	0.2m/s ~0.4m/s (typical 0.2m/s)
Mobility	100%
Setup time	≤ 30 minutes
Max. driving speed at transportation status	90km/h
Max. dose rate on the system boundary	≤ 1 μ Sv/h
Absorbed dose per scan	≤ 10 μ Sv
Dose rate for operator	≤ 1mSv per year
Dose rate for public	≤ 0.1mSv per year
G.V.W.	≤ 28,000kg
On board power supply	Approx. 40kVA
Vehicle chassis	Volvo FM series
Operating temperature	-20°C ~ +50°C (optional -30°C ~ +50°C)
Storage temperature	-30°C ~ +55°C
Humidity range	0 ~ 99%, non-condensing
Pixel depth	16 bit
Image acquisition mode	Real-time, synchronized
Zoom	1/4 × , 1/2 × , 1 × , 2 × , 4 × , 8 ×
Image analysis	Pseudo color, edge enhancement, filter, contrast adjustment, histogram equalization, linear/logarithm transform, normalization, suspicious item mark and comments, mirror, multi image comparison, procedure record, area calculation, user define macro, etc.
Options	Support EDI and Network Interfaces Radiation Monitoring (RM) Some Additional Features (Onboard cable drum, Distributed database management system, Remote image inspection, Autopilot scanning, Remote check-in station)

Company Locations

NUCTECH COMPANY LIMITED

Address: 2/F Block A, Tongfang Building,
Shuangqinglu, Haidian District,
Beijing PRC. 100084

Tel: (8610) 62780909

Fax: (8610) 62788896 62784270

Website: <http://www.nuctech.com>

NUCTECH HONG KONG COMPANY LTD.

Address: 2102, The Metropolis Tower,
10 Metropolis Drive, Hunghom,
Kowloon, Hong Kong

Tel: (00852) 2722828

Fax: (00852) 27221828

NUCTECH SYDNEY PTY LTD.

Address: Suite 14 702-710 Botany Rd Mascot,
NSW 2020 Australia

Tel: 0061-2-93172168

Fax: 0061-2-93172118

NUCTECH WARSAW COMPANY LIMITED SPOTKA Z.O.O.

Address: ul. Pandy 18
02-202 Warsaw Poland

Tel: +48 22 6591545

Fax: +48 22 6581483

JNE SECURITY SYSTEMS LTD.

Address: 1 Antares Drive, Suite 230
Ottawa, ON K2E 8C4 Canada

Tel: (613) 249 9602

Fax: (613) 249 0421

All copyright reserved by Nuctech Company Limited.

Technical data may change without notice.

© 2005 NUCTECH Corporation



NUCTECH HAS ACQUIRED THE CERTIFICATE OF QUALITY MANAGEMENT SYSTEM (ISO9001:2000)
NUCTECH HAS ACQUIRED THE CERTIFICATE OF ENVIRONMENTAL MANAGEMENT SYSTEM (ISO14001:2004)
NUCTECH HAS ACQUIRED THE CERTIFICATE OF OCCUPATIONAL HEALTH AND SAFETY MANAGEMENT SYSTEM(OHSAS18001:1999)

 **NUCTECH**

 **JNE Security Systems**